



# Cambridge O Level

CANDIDATE  
NAME

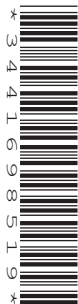
--

CENTRE  
NUMBER

--	--	--	--	--

CANDIDATE  
NUMBER

--	--	--	--



**FASHION & TEXTILES**

**6130/01**

Paper 1 Theory

**May/June 2024**

**2 hours**

You must answer on the question paper.

You will need: Ruler  
Small piece of fabric, needle and thread

## INSTRUCTIONS

- Answer **four** questions in total:
  - Section A: answer **all** parts of Question 1.
  - Section B: answer **three** questions.
- Use a black or dark blue pen.
- Write your name, centre number and candidate number in the boxes at the top of the page.
- Write your answer to each question in the space provided.
- Do **not** use an erasable pen or correction fluid.
- Do **not** write on any bar codes.
- You may use an HB pencil for any diagrams or rough working.
- You should illustrate your answers with clear, bold diagrams wherever necessary.
- You may use a needle and thread and a small piece of fabric to help in making drawings of stitches.
- This fabric should **not** be handed in with your work.

## INFORMATION

- The total mark for this paper is 100.
- The number of marks for each question or part question is shown in brackets [ ].

This document has **20** pages. Any blank pages are indicated.

SECTION A

Answer **all** questions in this section.

1 Fig. 1.1 is a drawing of a child's sun dress.



Fig. 1.1

(a) (i) The child's sun dress in Fig. 1.1 is made from printed lawn fabric. Identify the construction method used to make lawn fabric.

..... [1]

(ii) Describe the appearance of plain lawn fabric.

.....  
..... [1]

(iii) State **three** reasons for using 100% cotton to make the lawn fabric for the child's sun dress in Fig. 1.1.

.....  
.....  
.....  
.....  
..... [3]

(iv) Suggest **one** sustainable manufactured fibre suitable to make the lawn fabric for the child's sun dress in Fig. 1.1.

..... [1]

(v) State **two** advantages of using a blend of polyester and cotton to make the lawn fabric for the child's sun dress in Fig. 1.1.

.....  
.....  
.....  
..... [2]

(b) Suggest **one** different method of controlling fullness in the skirt of the child's sun dress in Fig. 1.1.

..... [1]

(c) Describe **one** component that could be used instead of a button to fasten the shoulder straps of the child's sun dress in Fig. 1.1.

.....  
..... [2]

(d) (i) Identify the method used to finish the neckline edge of the child's sun dress in Fig. 1.1.

..... [1]

(ii) Identify the type of stitching used at the neckline and hem of the child's sun dress in Fig. 1.1.

..... [1]

(iii) Identify **two** types of pockets that could be added to the child's sun dress in Fig. 1.1. Give **one** advantage of using each type of pocket.

Pocket type 1 .....

Advantage .....

.....

Pocket type 2 .....

Advantage .....

.....

[4]


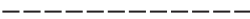


- (e) Identify the production method that would be used to make a limited number of the child's sun dress in Fig. 1.1.

..... [1]

- (f) Sketch and label a design for a small bag to use as an accessory for the dress in Fig. 1.1. Your bag should have a fastening, a simple appliqué design based on a flower and the colours used should be shown.

[4]

- (g) Explain the meaning of the following pattern symbols:

Pattern symbol	Explanation of meaning
	
	
	
	

[4]

(h) (i) Identify **two** types of seams other than a plain open seam.

.....  
..... [2]

(ii) Give **two** stitch settings used to sew straight stitch on a sewing machine.

.....  
..... [2]

(i) Identify **two** methods of applying colour to fabric.

.....  
..... [2]

(j) (i) Explain the way in which reflective textiles work.

.....  
.....  
.....  
.....  
.....  
.....  
..... [3]

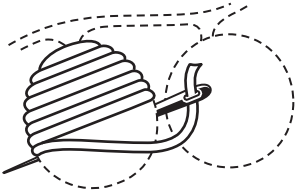
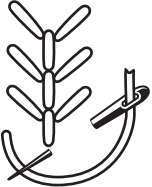
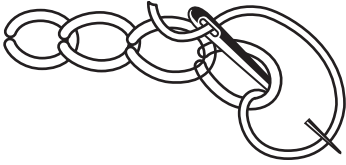
(ii) Give **one** example of a use for reflective textiles.

..... [1]

(k) Identify **one** type of fastening suitable to use on a baby garment.

..... [1]

(I) Identify each hand embroidery stitch in the table below.

Drawing of hand embroidery stitch.	Identify stitch.
	
	
	

[3]

[Total: 40]



**SECTION B**

Answer **three** questions in this section.

2 (a) (i) Identify the origin of silk fibres.

..... [1]

(ii) Explain how silk fibres are made.

.....  
.....  
.....  
.....  
.....  
.....  
.....  
.....  
.....  
.....  
.....  
..... [4]

(b) Identify **one** fabric made from silk fibres.

..... [1]

(c) Identify **two** regenerated fibres with similar performance characteristics to silk fibres.

.....  
..... [2]

(d) Evaluate the uses of silk fabrics for luxury garments.

.....  
.....  
.....  
.....  
.....  
.....  
.....  
.....  
.....  
.....  
.....





3 (a) List **four** guidelines to follow when laying out pattern pieces on fabric ready for cutting out.

.....  
.....  
.....  
..... [4]

(b) Explain how to attach beads and sequins to a wedding dress.

.....  
.....  
.....  
.....  
.....  
.....  
.....  
.....  
.....  
..... [4]

(c) Assess the factors to consider when selecting fabric for a wedding dress.

.....  
.....  
.....  
.....  
.....  
.....  
.....  
.....  
.....  
.....  
.....  
.....  
.....  
.....  
.....  
.....  
.....  
.....  
.....  
.....  
.....  
.....











6 Fig. 6.1 shows the front and back views of a sports top.

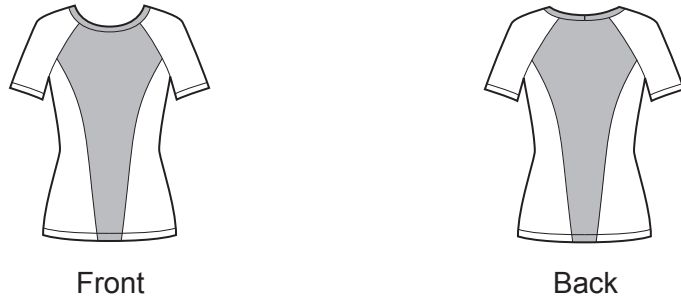


Fig. 6.1

(a) (i) Identify the sleeve type shown in the sports top in Fig. 6.1.

..... [1]

(ii) Identify **one** reason for choosing the sleeve type shown in Fig. 6.1 for a top worn for sports activities.

..... [1]

(iii) Describe the sequence of processes to make the sports top in Fig. 6.1.

.....  
.....  
.....  
.....  
.....  
.....  
.....  
.....  
.....  
.....  
.....  
.....  
.....  
.....  
.....  
.....  
.....  
.....  
.....  
.....  
.....  
..... [6]





.....

.....

.....

..... [6]

[Total: 20]



**BLANK PAGE**

---

Permission to reproduce items where third-party owned material protected by copyright is included has been sought and cleared where possible. Every reasonable effort has been made by the publisher (UCLES) to trace copyright holders, but if any items requiring clearance have unwittingly been included, the publisher will be pleased to make amends at the earliest possible opportunity.

To avoid the issue of disclosure of answer-related information to candidates, all copyright acknowledgements are reproduced online in the Cambridge Assessment International Education Copyright Acknowledgements Booklet. This is produced for each series of examinations and is freely available to download at [www.cambridgeinternational.org](http://www.cambridgeinternational.org) after the live examination series.

Cambridge Assessment International Education is part of Cambridge Assessment. Cambridge Assessment is the brand name of the University of Cambridge Local Examinations Syndicate (UCLES), which is a department of the University of Cambridge.